

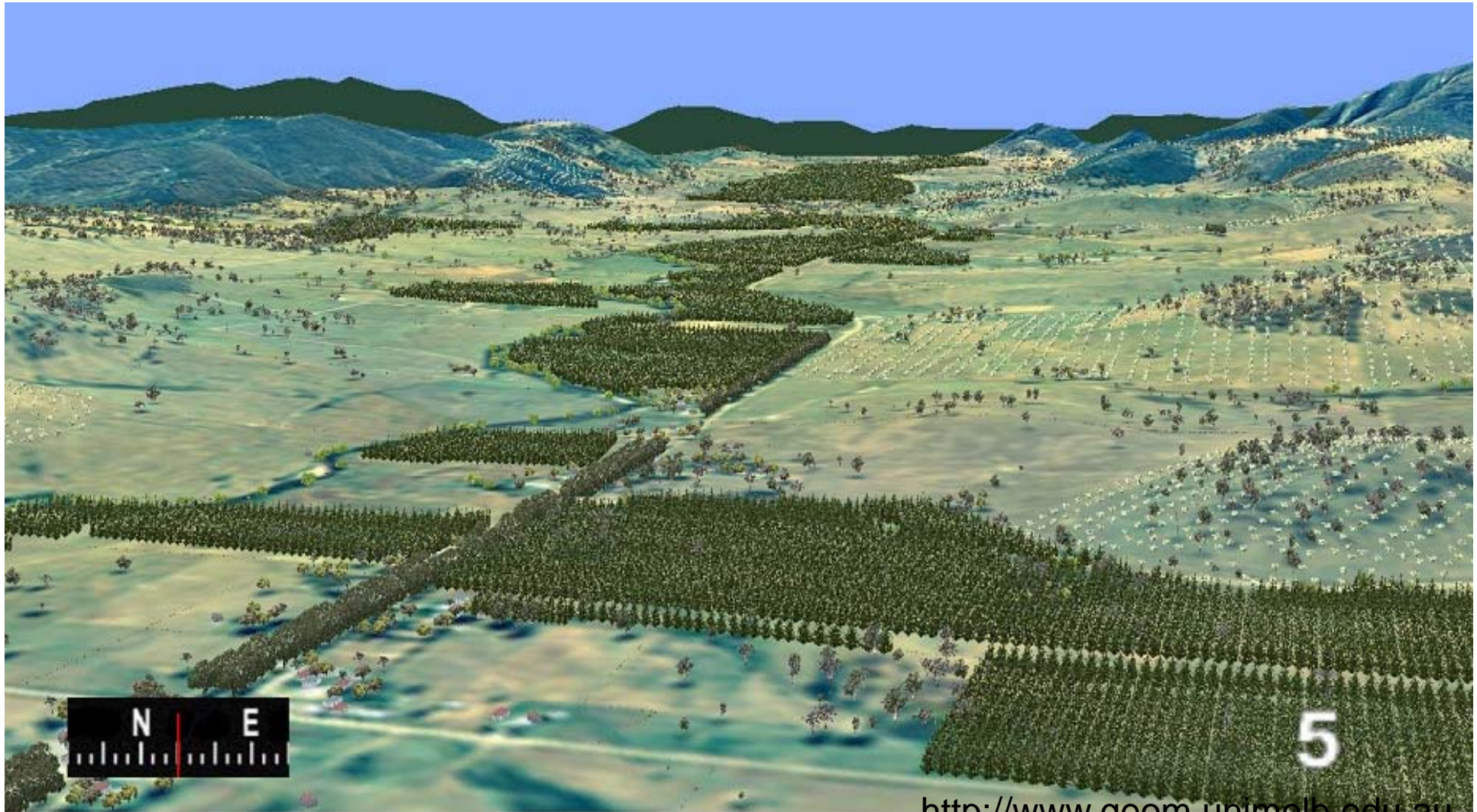


The Carbon Project

2009-2013

LP10: More bang for your carbon buck: carbon, biodiversity and water balance consequences of whole-catchment carbon farming







**How will widespread re-vegetation of the
landscape impact on core ecosystem
values??**



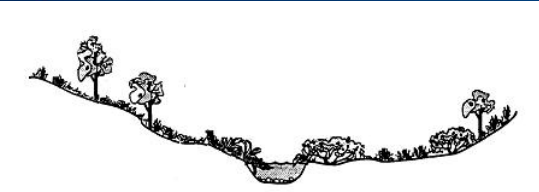
Research Aims:

- **To develop a robust observational and modelling platform for soil-plant-atmosphere carbon and water fluxes for a range of land-use practices, including carbon farming, in these landscapes**
- **To assess how carbon farming can be modified to increase biodiversity conservation**
- **To use the recently developed Catchment Management Framework (DSE) as a modelling environment to generate a scalable model of carbon, water and biodiversity values to investigate impacts of different future climate across entire catchments**

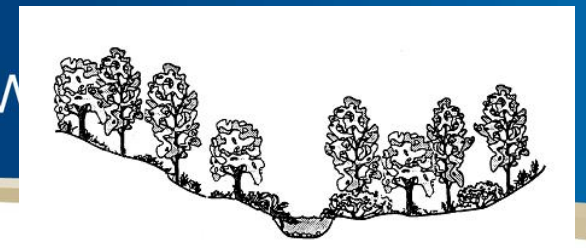




agriculture



reforestation



remnant woodland





Wombat





Not only structure - luckily these are downwind





M

sh.edu





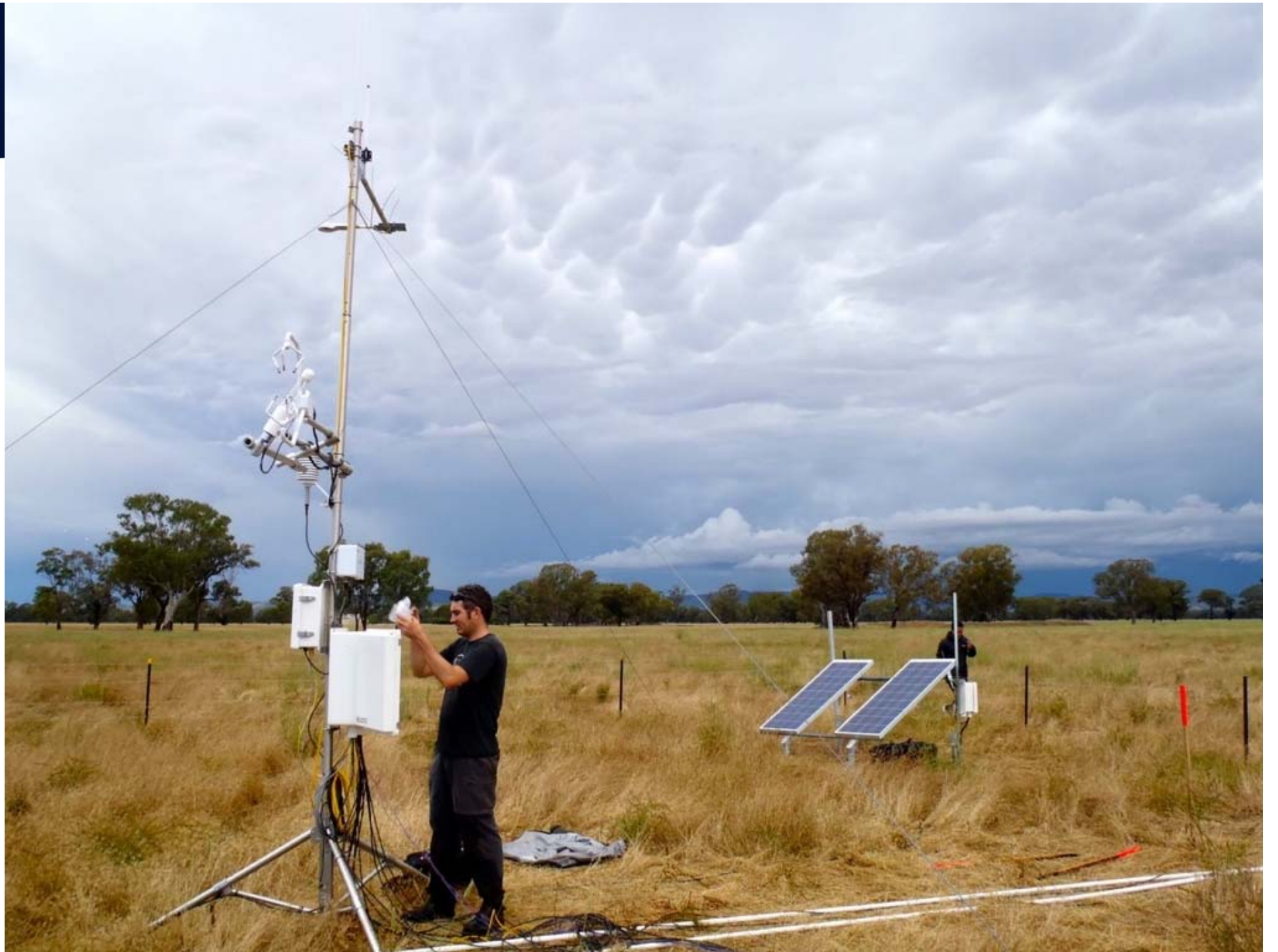
MONASH University

Carbon Project
Euroa

Riggs creek pas www.monash.edu









Text

Carbon Project Whroo YellowBox Forest



MON

www.monash.edu





MONASH

onash.edu



KINGLAKE POST FIRE

Text







MONASH

monash.edu









MONASH

onash.edu







MONASH U

monash.edu







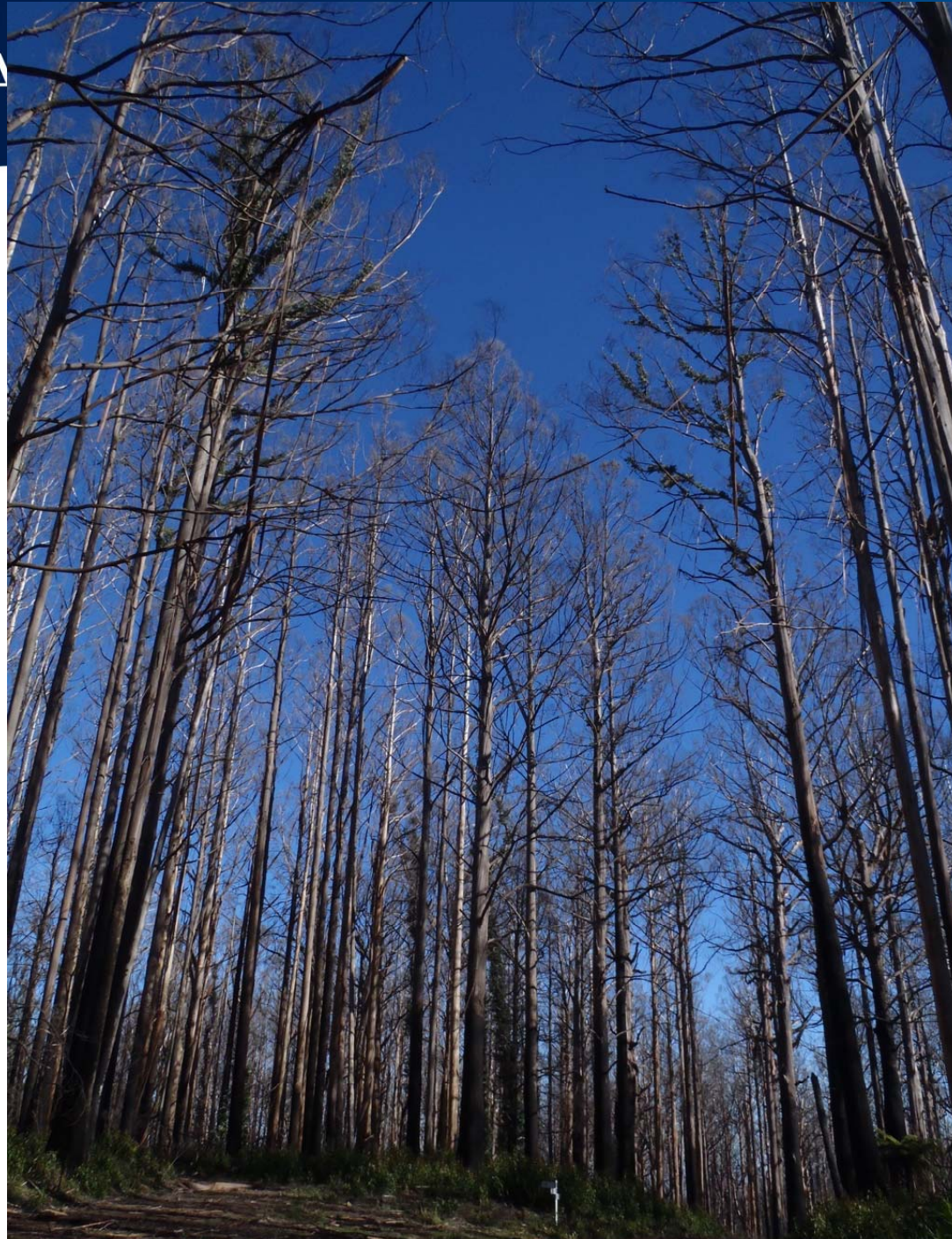


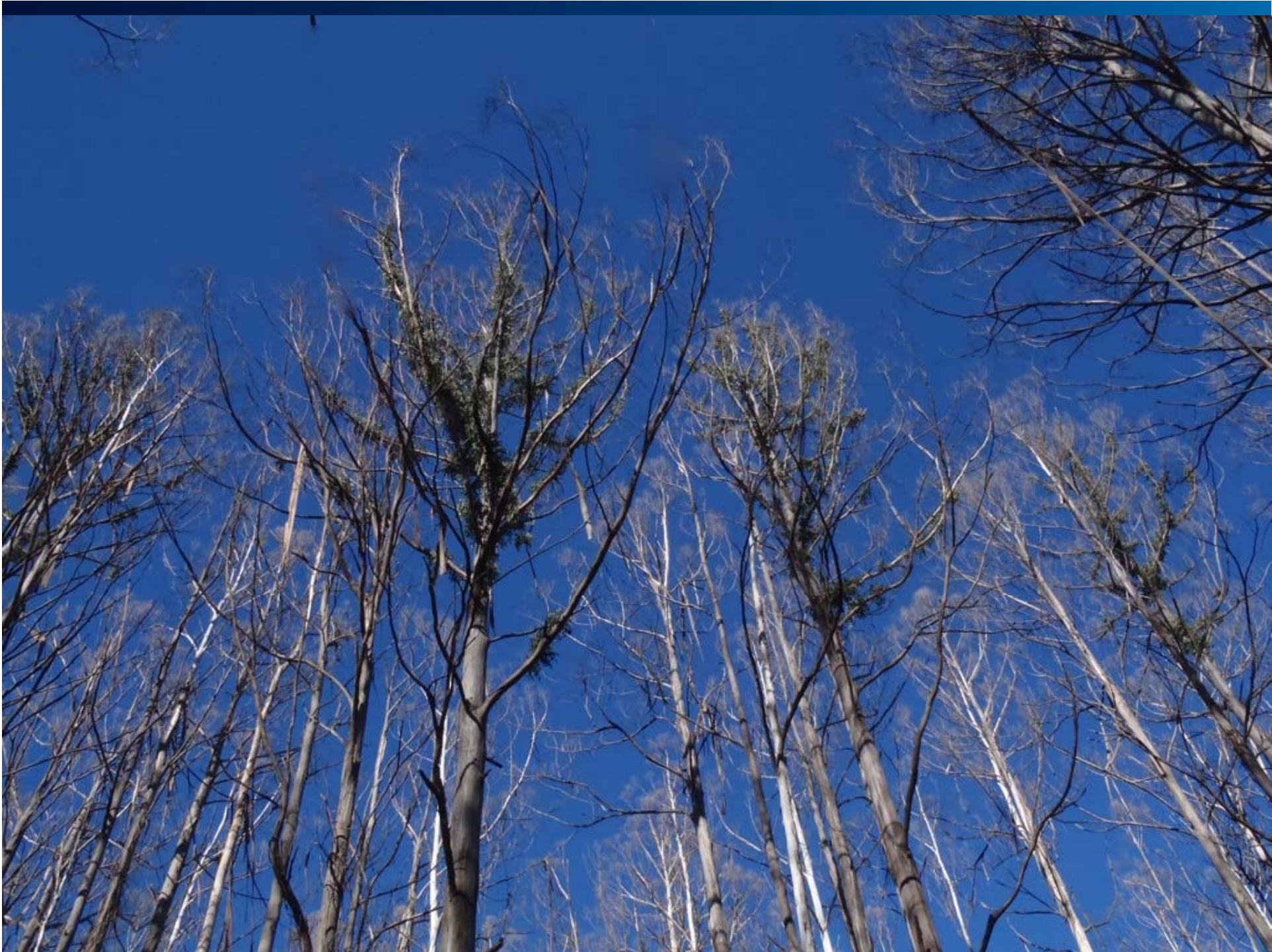




MONA

monash.edu







SIDE TRIP TO CALPERNUM





MONAS

monash.edu

